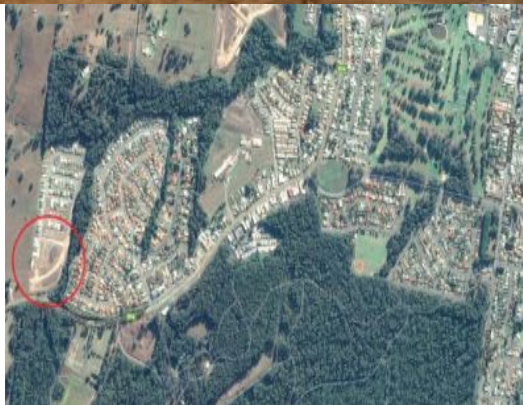




# REGIONAL AND RURAL REALTY

Port Macquarie - Wauchope - Camden Haven

6516-1960



## Level blocks with bush outlook - Timbertown Estate in Wauchope

Easy to build and maintain, level blocks in the latest land release of the quiet and desirable Timbertown Estate.

This is the second last release of land before completion of the popular and private estate.

Hidden away with bush outlook and just a minutes drive to Timbertown shops including IGA, Tavern, Cafe, Chemist and Medical Services.

Affordable opportunity for a brand new home in Wauchope, just 20 minutes from Port Macquarie.

A great range of 3 and 4 bedroom house and land packages available.

Contact Regional and Rural Realty on 6516 1960 for further details.

## Lot 420 Blacksmith Street WAUCHOPE, NSW

**Price:** \$179,500



**Janette Oliver**

0415167888

jen@r-r.com.au

[www.regionalandruralrealty.com.au](http://www.regionalandruralrealty.com.au)

Disclaimer:- Regional and Rural Realty advises that all property information provided on any of our brochures, websites or other materials is provided purely as a service of convenience to you. All such information relating to but not limited to price, size of land, floor plans, diagrams, dimensions, boundaries and general property information has been supplied to Regional and Rural Realty by others. None of this information, has been verified or checked by Regional and Rural Realty for accuracy or otherwise. It is simply passed on to you as a convenience. Regional and Rural Realty has no knowledge one way or other in regards to the validity or accuracy of the information, and therefore advise you to rely upon your own enquiries to establish the accuracy of the information.