



4   2   2

## Johns River Lifestyle Acres in the Port Macquarie Region

Presenting an amazing home in a sought after, private location that is handy to both Taree and Port Macquarie.

Built from quality stonemason laid sandstone and solid timber beams providing stunning aesthetic appeal whilst using modern maintenance-free materials throughout the living area, complementing the spacious new granite kitchen.

By adding your own touches and finishing off some gyprocking and bath areas, you will achieve a magnificent high-quality home on lifestyle acres, a rare find at this price.

This property also boasts some container-home accommodation which would suit a large family or BnB (subject to council approval).

Explore the endless opportunities with this property by arranging a private tour with Amanda by calling 0459 030 021.

156 Wharf Rd JOHNS RIVER, NSW

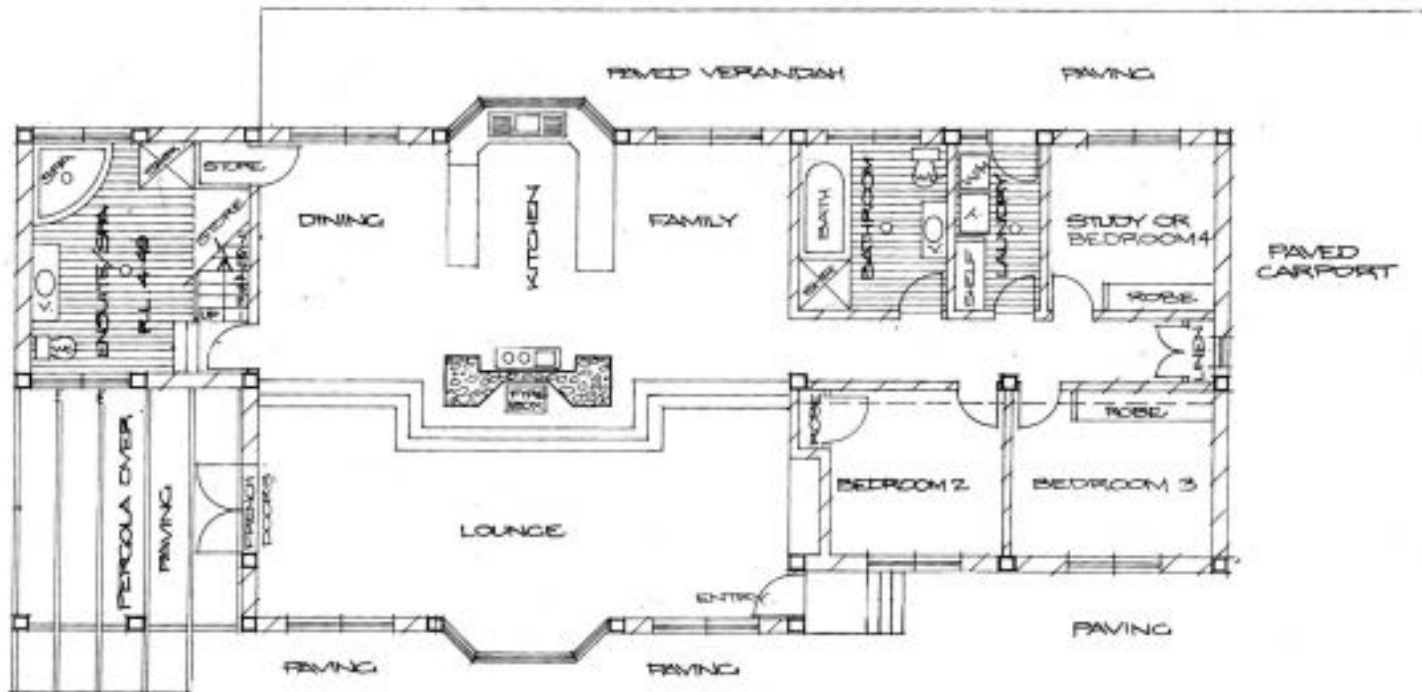
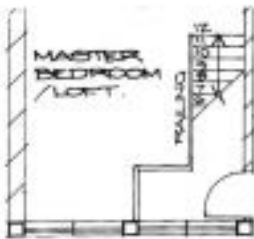
**Price:** \$750,000



**Janette Oliver**  
0415167888  
jen@r-r.com.au

[www.regionalandruralrealty.com.au](http://www.regionalandruralrealty.com.au)

Disclaimer:- Regional and Rural Realty advises that all property information provided on any of our brochures, websites or other materials is provided purely as a service of convenience to you. All such information relating to but not limited to price, size of land, floor plans, diagrams, dimensions, boundaries and general property information has been supplied to Regional and Rural Realty by others. None of this information, has been verified or checked by Regional and Rural Realty for accuracy or otherwise. It is simply passed on to you as a convenience. Regional and Rural Realty has no knowledge one way or other in regards to the validity or accuracy of the information, and therefore advise you to rely upon your own enquiries to establish the accuracy of the information.



**DISCLAIMER**

PLANS SHOWN ARE FOR MARKETING PURPOSES ONLY. ALL DIMENSIONS ARE APPROXIMATE AND NOT TO SCALE. THEY ARE SUBJECT TO ERRORS AND INACCURACIES AND NO LIABILITY WILL BE ACCEPTED. INTERESTED PARTIES SHOULD MAKE THEIR OWN INQUIRES.



**REGIONAL AND RURAL  
REALTY**